



JOHNS ON COUNTY
KANSAS
Health & Environment

October 26, 2021

COMMUNITY HEALTH NETWORK

Zoom meeting

Attendees: Barbara Mitchell, JCDHE, Mary Beverly, JCDHE, Alison Smith, JCPRD, Wanda Vaughn, Community Member, Catherine Rice, Health Partnership Clinic Megan Foreman, JCDHE, Charlie Hunt, JCDHE, Linda Gallagher, DCF, Cris Lowe, SW Multi-Service Center, Karole Bradford, KCMS Foundation, Laura Grimmett, JCDHE, Ashley Follett, JCDHE, E. Keller, HLC, Megan Clark, JCL, Shelby Rebeck, SMSD, Jill Likert, JCPRD, Kara Lubischer, Saint Luke’s, Deb Kellison, JCDHE, Sharon Morris, Olathe School District, Ben Boothe, Gardner School District, Sara Prem, American Lung Assn., Kristy Baughman, United Community Services, Jamie Katz, MNH, Dawn Cubbison, Aetna, Jill Raiford, JCDHE, Shanti Ramcharan, Aetna, Amy Falk, Health Partnership Clinic, Crystal Futrell, EXC, Mike Krueger, JCDHE, Karen Dehais, Health Forward, Suzanne Robinson, Mercy and Truth, Jen Jordan-Spence, City of Gardner, Jeanette Metzler, Advent Health, Justin Gust, El Centro, Sarah Dement, Olathe School District, Renee Bryant, JCDHE, DP Jones, Alison Wiley, JCDHE, Yunuen Bustamante-Trejo, Nicole Brown, JCDHE, Stephanie Dejohn, Mariah Chrans, WyCo

Agenda item	Discussion
Welcome/Introductions	Meeting facilitated by Barbara Mitchell, JCDHE
Public Health 3.0 Presentation	<p>Power Point presentation by Mary Beverly, JCDHE</p> <p>Questions posed:</p> <p>What resonated with you about Public Health 3.0?</p> <ul style="list-style-type: none"> • Focus on inclusion • Violence Prevention and providing safe space • Putting into practice what so many have been saying for years • As a community we can do more together than any of us could do alone • Always love the idea of trainings and education, policy and advocacy work <p>How can we work better with you to reach our goals?</p> <ul style="list-style-type: none"> • Live Well/Age well – Alison Smith, JCPRD – Wellness Coordinator–Website shared – idea is to utilize this platform for listening sessions for PH 3.0 - https://jcprd.com/1181/Live-Well-Age-Well-Expo - Mary will reach out to continue to foster our partnerships. • Wanda Vaughn - Sexual Violence prevention survey...Another possibility to work with the Violence Prevention coalition to talk about 3.0 and conduct a listening session? • Focusing on the social determinants of health - Shelby Rebeck – Districts are very big – partnering on social determinants of health. Find out what zip codes have the most crime, most asthma, work with public housing, how can we work closer together? Mary’s thoughts: Reach out on projects to work together with Shelby and Children’s Mercy? • Cross-promotion • Aetna has a provider education series on SDoH and utilizing z-codes to help identify needs. Z codes (Z00–Z99) are diagnosis codes used for situations where patients don’t have a known disorder and represent reasons for encounters. They provide a monthly training to teach and go over best practices and to help providers make referrals. • Olathe neighborhood project – Megan Foreman shared – encouraged agencies to reach out to Olathe: https://www.olatheks.org/residents/community-resources/healthy-neighborhoods. Maybe we could also consider this for PH 3.0 listening sessions. • Chris Lowe – JoCo Multi-Service Center - Maybe take the mobile van out to Project Home in Shawnee and Impact Olathe?

	<ul style="list-style-type: none"> Always lean on other agencies to advertise your events or information. My Resource Connection through JOCO is a great free advertising platform.
<p>Updates and Announcements</p>	<ul style="list-style-type: none"> Catherine/Amy - The mobile mammo coach will be at Health Partnership on Jan. 26 and Feb. 28. To schedule an appointment, call 913-276-7098. Trail of Treats at Shawnee Mission Park, JCPRD this Friday, 5-8 if anyone wants to come and set up a booth they are welcomed. Hayrides at SMP. Nature Time Yoga at Earnie Miller. Medicare Basics, free virtual event on November 10th (Alison Smith, JCPRD). Boo to the Flu event 10/30, flu shot clinic (old Dillon's giving out food boxes, turkeys, hoodies also) drive thru clinic by Mercy and Truth. \$25 Mental Health First Aid trainings 11/3, 11/12-youth MHFA, 12/2. https://www.kdheks.gov/edw/ breast and cervical cancer screening information was shared. Multi Service Centers can help with vouchers provided by the KC Medicine Cabinet for emergency dental, hearing aids, eyeglasses and some RX help. Call 913-715-6653 for screening appt. Holiday Bejeweled Trees at Matt Ross Community Center, 11/8 from 9:30-11:30AM, \$15 per person.
<p>Review of Community Health Improvement Plan (CHIP) Priorities</p>	<p>Public Health Leadership Council info from Charlie Hunt Public Health 3.0 is a recognition that the public health system in Kansas is very outdated and is not meant to deal with the issues of today. The Johnson County Board of Health are elected officials and not appointed. This brings about conflict when considering the different needs for our community. The Public Health Leadership Council could be community leaders and help to serve as a sounding board for the BOCC and offer support for decision making.</p> <p>CHN will continue to work on the four priorities from the last CHA for the next three years to work on the improvement plan and conduct the next assessment at that time.</p> <ol style="list-style-type: none"> Social Connectedness Affordable Housing Substance Misuse Suicide Prevention <p>See the Health Happens Here JOCO website for info/updates on four priorities.</p>
<p>Next CHAP Meeting Date 2022</p>	<ul style="list-style-type: none"> January 25 April 26 July 26 October 25

On the road to
Public Health 3.0

Mary M. Beverly, MPH
Environmental Health Director
Health and Environment



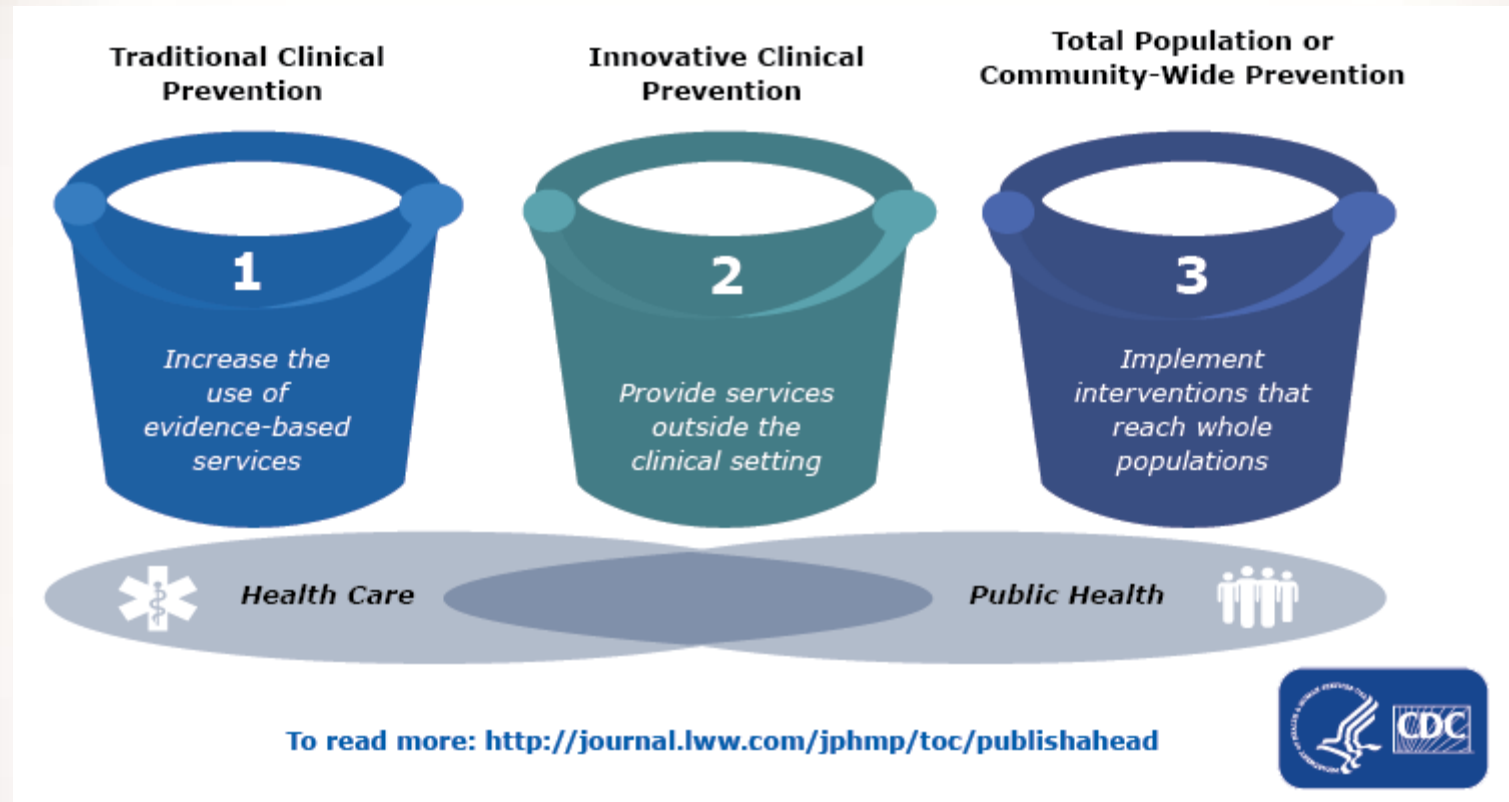
On the road with DHE

- We want to embark on a journey with you, our partners to ensure that we are meeting our goals as a public health department in the move to Public Health 3.0
- Public Health 3.0 is a model proposed by Dr. Karen DeSalvo, Former Assistant Secretary for Health, Kansas

PH 3.0 - Karen DeSalvo, MD

- Former Acting Assistant Secretary for Health - 2014-2017
- With colleagues at HHS in 2016 launched PH 3.0 initiative and hosted listening sessions across the country
- Public Health 3.0: A Call to Action for Public Health to Meet the Challenges of the 21st Century
- https://www.cdc.gov/pcd/issues/2017/17_0017.htm

Public Health 3.0



Public Health 3.0

- A new era of enhanced and broadened public health practice that goes beyond traditional public department functions and programs.
- Emphasizes collaborative engagement and actions that directly affect the social determinants of health and inequity.

Public Health 3.0

- Original Counties in roll out
 - Kansas City MO
 - Santa Rosa CA
 - Nashville TN
 - Spokane WA
 - Allegheny County, PA

SDOH and Inequities

- Policy
- Power
- Politics

How do we trace the policies of the past and into the present and future to ensure all people in our county have the best opportunities for good health?

Key Concepts

- Community Health Strategist Role
 - Mobilizing the community to action to positively impact social determinants of health
 - Enhanced Leadership and Workforce
 - Sharing the work in public health
 - Engaging with partners in specialty areas
 - Leveraging data for action

New Partnerships/Strengthening old

Engaging:

Multi sector/non- traditional partners

- Elected leaders
- Residents in community
- Businesses
- Faith based
- Civic
- Academic
- And more...

Steps on road to PH 3.0

- Access to local and relevant data
- Seeking non-traditional funding
- Telling the story of the community through data/story-telling
- Weaving PH 3.0 into HD strategic plan
- Building a Public Health Leadership council to consult and guide work

Final
quotes
from APHA
to leave
you with



“You cannot heal a physical body that is unwell if it’s living in an unwell social body” –

- Heather McGhee – Keynote, Author/Speaker/Advocate



“You cannot declare yourself an ally – this is bestowed upon you by the community” –

- Vayong Moua – Civic Engagement and community Cohesion speaker, BCBS

Next Steps

- Accreditation - CHECK!
- Researching successful models for PH 3.0
- Increasing our presence in community and improving our skill set
- New EMR and examination of clinical/social service referrals
- Education to staff/community
- Listening Sessions with departments and public
- Form a Public Health Leadership Council
- Plan an Annual Public Health Summit

Questions? Ideas? Sharing?

