



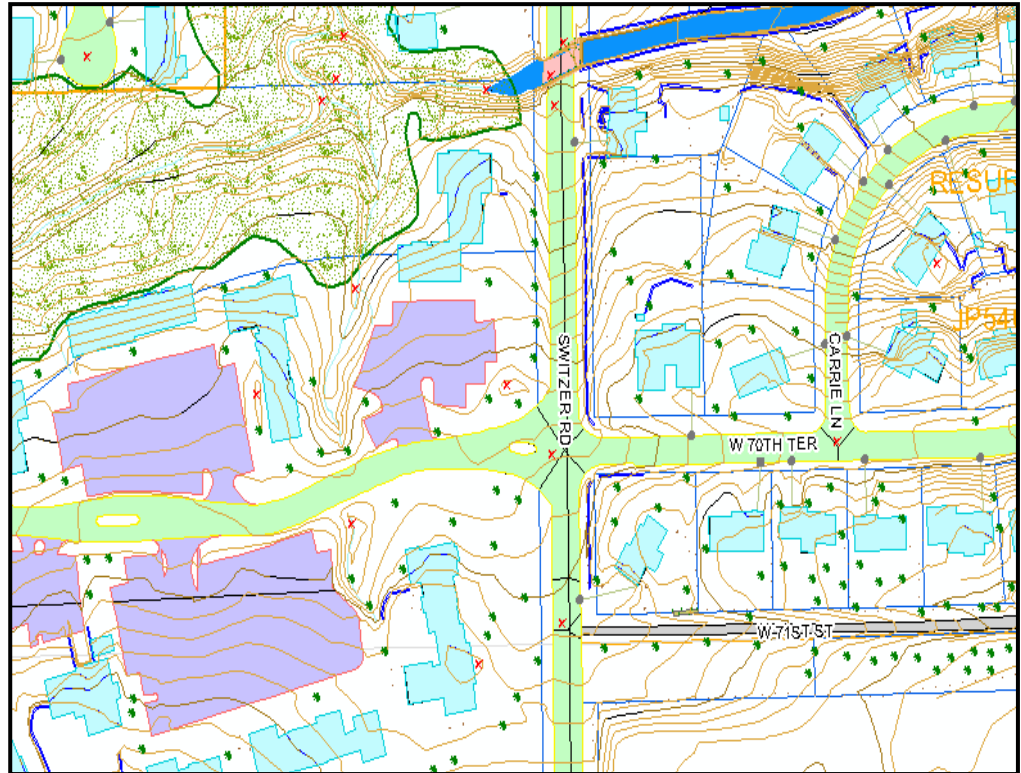
# Planimetric Data

*Comprehensive GIS Solutions for Johnson County*

## Pricing

A detailed fee schedule can be found on the AIMS website at <http://aims.jocogov.org/AIMSData/DataPrices.aspx>

Contact an AIMS representative for current data licensee information.



## Planimetric Data

AIMS maintains<sup>a</sup> very detailed planimetric database of geographic data in Johnson County. Planimetric data depicts natural and man-made features on the earth's surface. The detailed information includes<sup>a</sup> variety of features such as building outlines, elevations, utilities and water features. The planimetrics are derived from the AIMS orthophotography.

Planimetric data is available from AIMS in both digital and hardcopy formats. The planimetric data can also be viewed through the AIMS on-line mapping application at: <http://maps.jocogov.org>

Planimetrics contain features such as:

- ▶ **Building Outlines**
- ▶ **2 and 10 Foot Elevations**
- ▶ **Edge of Pavement**
- ▶ **Fences**
- ▶ **Above Ground Utilities**
- ▶ **Water Structures (dams, culverts, etc.)**
- ▶ **Water Features (streams, lakes, etc.)**
- ▶ **Trees**
- ▶ **Trails**
- ▶ **Mass Points**
- ▶ **Spot Height**