



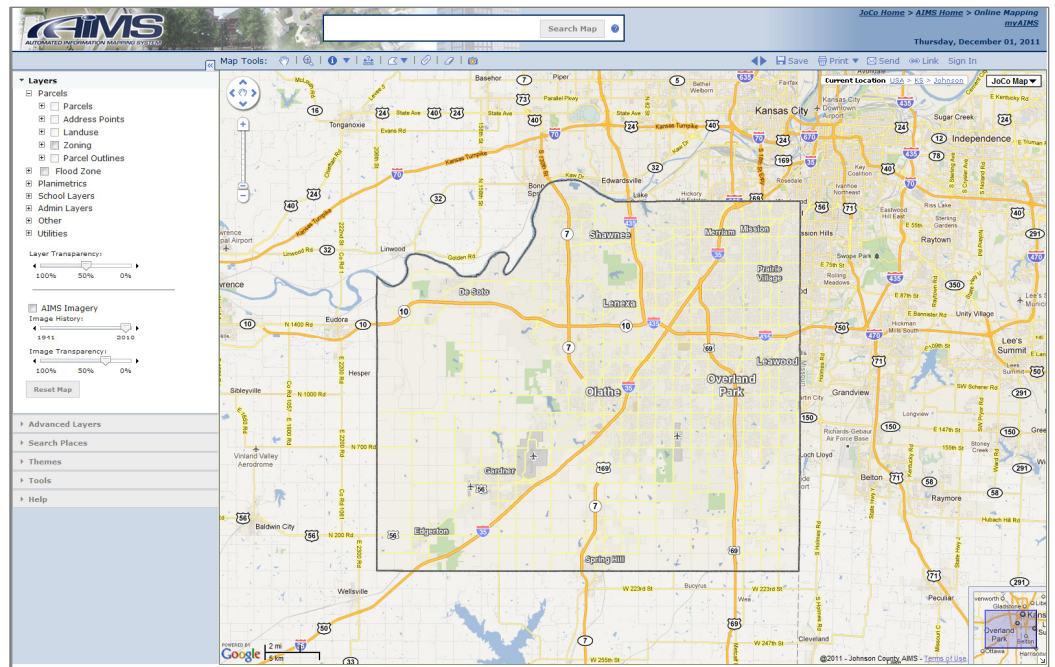
# Internet Mapping

Comprehensive GIS Solutions for Johnson County

## Pricing

Usage of the Johnson County Online Mapping Application is "free".

Enhanced features are available to AIMS data sharing partners.



## Johnson County Online Mapping – <http://maps.jocogov.org>

Johnson County Online Mapping Application is an interactive application that allows users to view and produce digital and hard copy maps using AIMS data through an Internet browser.

The Johnson County Online Mapping Application enables an end user to view the geographic data maintained by AIMS and its partners. In addition to the map image, a user can view attribute data about geographic features.

The goal of serving maps over the internet is to provide easier access to county-wide data. Training of the Johnson County Online Mapping is available.

For training dates and times visit the website at:  
<http://aims.jocogov.org/ProductsAndServices/AIMSClasses.aspx>

- Users can view county features such as:
- ▶ Aerial Photos
  - ▶ Schools and Parks
  - ▶ Property Dimensions and Boundaries
  - ▶ Planimetrics
  - ▶ Tax Bill Information
  - ▶ Appraisal Values
  - ▶ Utility Information
  - ▶ Subdivision Names and Boundaries
  - ▶ City Limits