

Geographic Data

Pricing

A few datasets can be downloaded for “free” from the AIMS website at:
<http://aims.jocogov.org/AI/MSData/FreeData.aspx>

A detailed fee schedule of additional datasets can be found on the AIMS website at:
<http://aims.jocogov.org/AI/MSData/DataPrices.aspx>

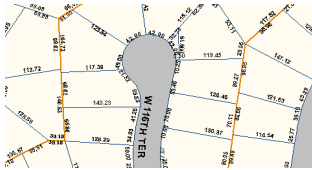
Contact an AIMS representative for current data licensee information.



Geographic Data Sets

AIMS maintains extensive databases of geographic data in Johnson County. Data licensees can purchase the data for use in their business practices.

- ▶ **Property and Land Records** – Spatial property features with county land records relationships.
 - Property Boundaries
 - Property Dimension
 - Owner Names
 - Addresses
 - Land Value



- ▶ **Aerial Photography** – Photographs of the earth’s surface. Traditional and Oblique photos are available.



- ▶ **Planimetrics** – Natural and man-made features on the earth’s surface, including:

- Building Outlines
- Utility Features
- Topography/Elevation
- Edge of Pavement
- Water Features



- ▶ **Addresses/Street Centerline** – Countywide address dataset and “intelligent” street centerline database.

- ▶ **Misc. Data Sets** – Zip code boundaries, apartments, parks and recreation facilities, schools etc.

Geographic data can be delivered both digitally and in hardcopy format. Most of the geographic data can be viewed on the AIMS on-line mapping application at:
<http://maps.jocogov.org>