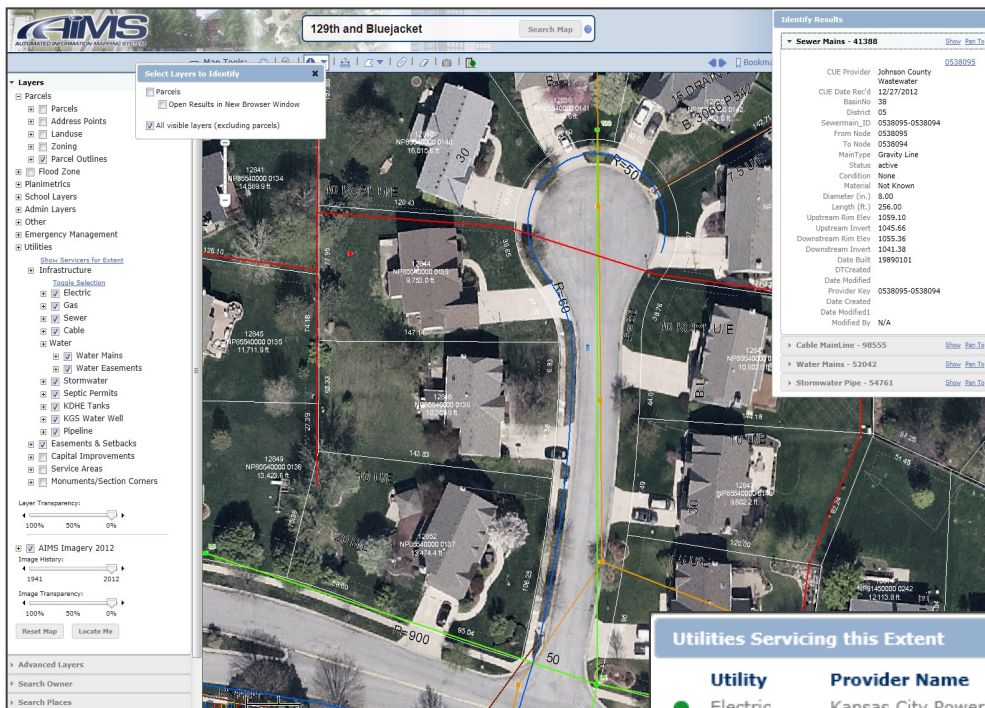


CUEView

- Utility Lines
- Service Areas
- Easements
- Capital Improvement Plans
- Property Lines
- As-Built Diagrams



| Utilities Servicing this Extent | | |
|---------------------------------|---------------------------|--|
| Utility | Provider Name | Usage Notes |
| ● Electric | Kansas City Power & Light | |
| ● Water | WaterOne | Meters, laterals, and valves not provided. |
| ● Gas | Atmos Energy | No data. |
| ● Sewer | Johnson County Wastewater | Laterals/Stubbs Not Provided |
| ● Stormwater | City of Overland Park | Connect directly to SDE |
| ● Cable | SureWest | Data may not be current (data is 675 days old). |
| ● Cable | Time Warner Cable | Data may not be current (data is 2031 days old). |

What is CUEView?

CUE stands for Collaborative Utility Exchange. The viewer is a secure web application that provides access to utility information in Johnson County including service areas, easements, as-builts, capital improvement plans, and a collection of infrastructure line work provided by participating utilities within Johnson County.

What are the Benefits of CUE?

- Aids communication between utility providers within Johnson County
- More informed decision making during planning and design phases of infrastructure development
- Facilitates obtaining permits from the municipalities in Johnson County
- Increases the efficiency of workflows within organizations
- When used in conjunction with CreateMap PDF and DDR, CUE users can generate utility maps in Adobe Acrobat (PDF) format and download utility data as AutoCAD or Shape files.

Who can get access to CUEView?

AIMS developed the secure web application to allow the various utility providers within the county to share their information with one another. This viewer is available on an annual subscription basis to those with a justifiable business need for accessing this information, such as engineering firms, architects and design firms. To ensure the security of Johnson County's utility infrastructure and its citizens, this application is not available to the general public.