

# COURTHOUSE FACTS

Johnson County Facilities Management

August 2016

## General Background Information

**Year Built: 1952**

**Additions: 1953, 1968, 1975**

Major remodels: 1988, 1989, 1997, 1998, 2003, 2008, 2014

**Exterior SF: 233,000 Interior SF: 223,409**

(Exterior SF includes perimeter walls)

**# Courtrooms: 23**

**# Hearing Rooms: 2**

**# Occupants: @ ~~145~~**

**#Judges: 23**

(19 District & 4 Magistrate)

**Note: last 15 years: one (1) district judge added 2007 & one (1) magistrate judge added 2005**

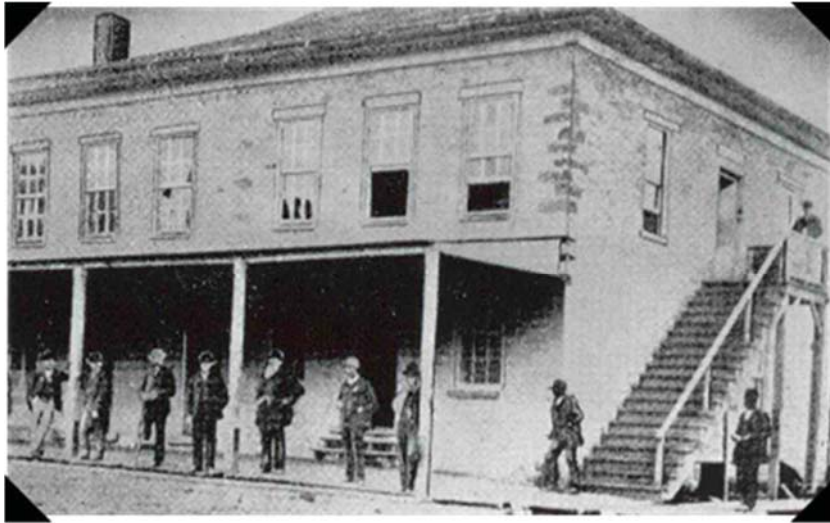
ORGANIZATION REPORT (Dept. Gross SF 132,364;	TOTAL AREA ft <sup>2</sup>
Un-assigned	56,572
District Attorney	21,897
District Court	65,881
Court Clerk	10,763
Court Trustee	3,842
Dept. Technology & Innovation	978
Facilities Mgmt.	21,735
JIMS	4,784
Kansas Highway Patrol	184
Law Library	4,606
Sheriff	17,219

<b>Completed or approved funding</b>	
CRP 2013 & Courthouse Remodel	\$ 5,700,000
CRP 2014	\$ 2,332,000
CRP 2014	\$ 120,000
CRP 2015	\$ 2,070,000
<b>Total</b>	<b>\$ 10,222,000</b>
<b>Anticipated Future Work (Inflated)</b>	
10 YR CRP (excluding above)	\$ 12,133,880
Courthouse 1st FL east	\$ 2,052,000
Courthouse remodel & security	\$ 20,325,000
S & W Egress, ADA & Security	\$ 4,891,000
Courtroom AV	\$ 3,793,491
<b>Total</b>	<b>\$ 43,195,371</b>
<b>Courthouse Addition &amp; Continued Use of Existing Bldg.</b>	
<b>Addition - \$91,755,000 (Inflated)</b>	<b>\$ 148,791,071</b>
<b>New Courthouse (Inflated)</b>	<b>\$ 148,600,000</b>

2016 CIP Submittal Information



**Significant  
Improvements  
Needed**



Phot Courtesy of the Johnson County Museum

## The History of The Johnson County Courthouse

### The original “Courthouse”

“In the spring of 1859, Frederick W. Case father of Harry and Shelly Case began the erection of a stone building on the corner of Park Street and Kansas Avenue [in Olathe]...This building was occupied by the county for courthouse purposes until the [1891] courthouse was built.” -- Johnson County Democrat, Sept. 1, 1927

## The 1891 Courthouse

Three attempts to get voter approval of bond issues to finance the construction failed. Finally, in 1888, county commissioners agreed to a tax levy to raise \$40,000 in three years for the project. The Architect was George Washburn of Ottawa. The project was started in May, 1891, the cornerstone was laid on the fourth of July, 1891 and the building was dedicated in August, 1892. The courthouse stood until after the construction of the first phase of the existing courthouse, when it was demolished. The statue of the “Goddess of Justice” can be seen atop the central gable.





## Goddess of Justice

The “Goddess of Justice” statue was a gift from George Washburn. When the courthouse was demolished in 1952, she was stored in a basement for several years, and then put on display in the County Museum, and in 1997 she was returned to the lobby of the courthouse. Her scales are replacements, the originals lost to a lightning strike.



Photo Courtesy of the Kansas City Star; Feb. 28, 1952

## A Courthouse for the 20th Century

In the post-war era, Johnson County saw a building boom and tremendous growth as a suburban community. A need for a new County Courthouse was realized to accommodate the growth in County government. The face of downtown Olathe was about to change. The courtyard in front became the site for the new Courthouse. Ground was broken in 1951 and the building was completed in 1952. The building contained two courtrooms and the County Jail. Shortly afterwards, the old Courthouse was demolished. The architectural firm was Glover and Newcomb out of Topeka, Kansas.

## Adding to the Courthouse

In 1953 work was begun on the second phase of the Courthouse which was completed in 1954. The building housed most departments of the County Government in addition to the courts system. The architectural firm was Neville Sharp & Simon out of Kansas City, Missouri.

In 1968, a third wing was added at the north end of the structure. It contained three stacked courtrooms and a space for the IT Department in the basement. The architectural firm was Hollis and Miller Architects and Engineers out of Overland Park, Kansas.



Photo Courtesy of the Johnson County Museum

## The Tower

1975 saw the completion of the final phase of the existing Courthouse. An eight story tower was added on the east side of the building, providing a new main entry with a three story atrium. The architectural firm was Hollis and Miller Architects and Engineers out of Overland Park, Kansas.



## And most recently ....

In 1996, the north entry was relocated to the south doors and the 3 story atrium area was repurposed to accommodate the new physical plant. The architectural firm was BNIM out of Kansas City, Missouri.

In 2013, a major remodel of first, fourth and sixth floors was approved. The Sheriff's Office and Court Trustee moved to 588 Santa Fe which allowed additional space for the already cramped District Attorney's office and the addition of two new family courtrooms. The architect is Clark Enersen Associates out of Kansas City, Missouri.